



MONTHLY MEMBERSHIP PROGRESS REPORT

District 5M 2

Results as of: 08/31/2018

GMT: MICHAEL MOLEND A

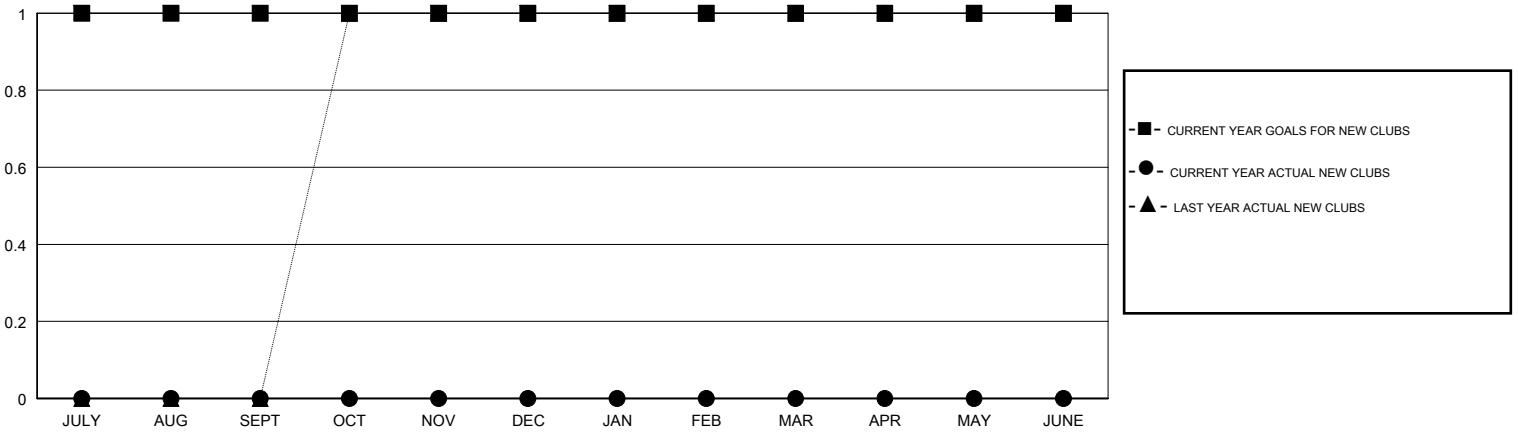
LOCATION MINNESOTA

GMT CA

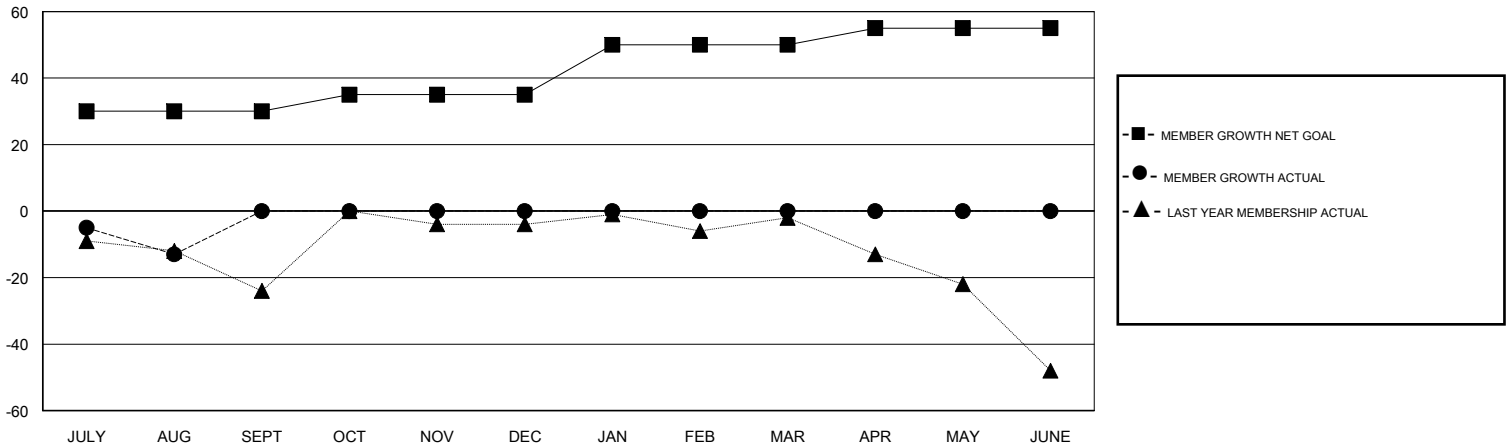
Clubs			
RESULTS FOR 2018-2019			
QUARTER	NEW CLUB GOAL	NEW CLUBS	DROPPED CLUBS
JULY/AUG/SEPT	1	0	0
OCT/NOV/DEC	0	0	0
JAN/FEB/MAR	0	0	0
APR/MAY/JUNE	0	0	0

Members			
RESULTS FOR 2018-2019			
QUARTER	MEMBER GROWTH NET GOAL	MEMBER GROWTH ACTUAL	DROPPED MEMBERS ACTUAL (including transfers)
JULY/AUG/SEPT	30	14	25
OCT/NOV/DEC	5	0	0
JAN/FEB/MAR	15	0	0
APR/MAY/JUNE	5	0	0

GOALS AND ACTUAL NEW CLUBS CUMULATIVE



GOALS AND ACTUAL MEMBERS CUMULATIVE



DROPPED CLUBS: 0	8 CLUBS OF 65 ADDED 1 OR MORE NEW MEMBERS	<u>GENDER DISTRIBUTION</u>	
DROPPED MEMBERS		MALE	1,693 (70.40%)
DECEASED	7	FEMALE	712 (29.60%)
CLUB CANCELLED	0	Women Percentage Fiscal Year Goal: 30%	
OTHER	18	CLICK HERE FOR CUMULATIVE MEMBERSHIP DATA	
TOTAL	25	TOTAL FAMILY UNIT MEMBERS	395
		FAMILY MEMBERS PAYING HALF DUES	199